

**sitia**<sup>®</sup>

— the human  
contract



# — materials & finishings



# — Mirage

# — Secret by Flukso

## Categoria B3



B3 426 Army



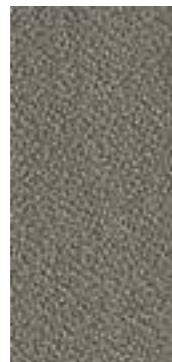
B3 651



B3 053 Mango



B3 571



B3 625



B3 629



B3 572



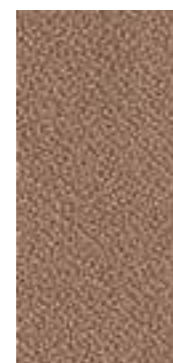
B3 120



B3 231



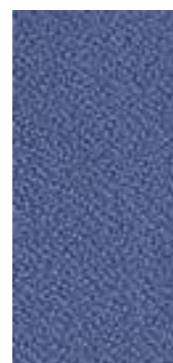
B3 175



B3 534



B3 532



B3 263



B3 333

## Categoria B6



B6 017



B6 012 Army



B6 001



B6 015



B6 016



B6 007 Mango



B6 006



B6 005



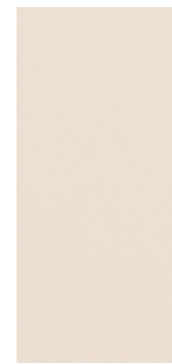
B6 019



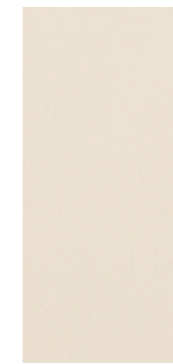
B6 020



B6 014



B6 004



B6 002



B6 011



B6 008



B6 009



— Tailor F.R.  
by Flukso

— Fenice

Categoria I7



I7 255



I7 205 Army



I7 550



I7 850



I7 750



I7 115 Mango



I7 245



I7 195



I7 185



I7 350



I7 135



I7 125



I7 155



I7 265

Categoria I8



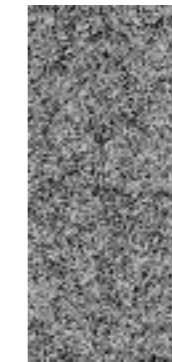
I8 452 Army



I8 052 Mango



I8 301



I8 602



I8 351



I8 603



I8 302



I8 502



I8 503



I8 451



I8 102



I8 103



I8 551



I8 251



— Extrema Au Ikon  
by Flukso

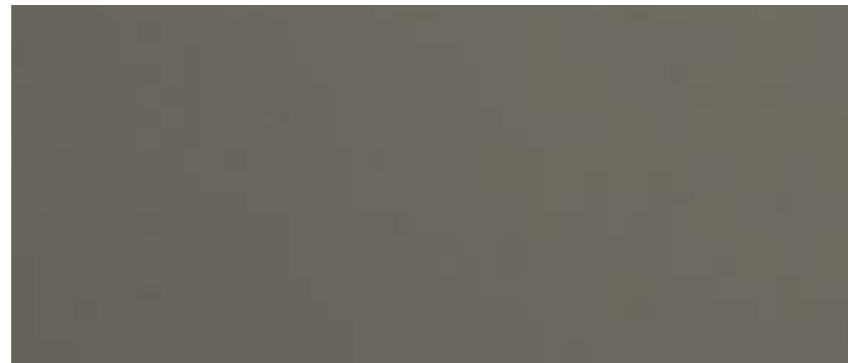
— Mesh  
by Krall&Roth

Categoria L6

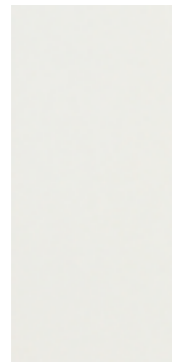
Categoria RX



L6 223



L6 530 Army



L6 230



L6 243



L6 130



L6 213



L6 103 Mango



L6 430



L6 183



L6 173



L6 163



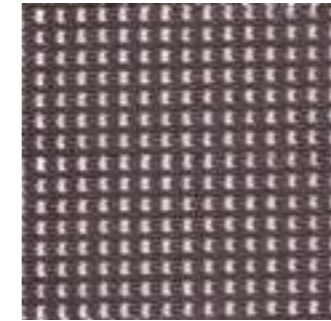
L6 123



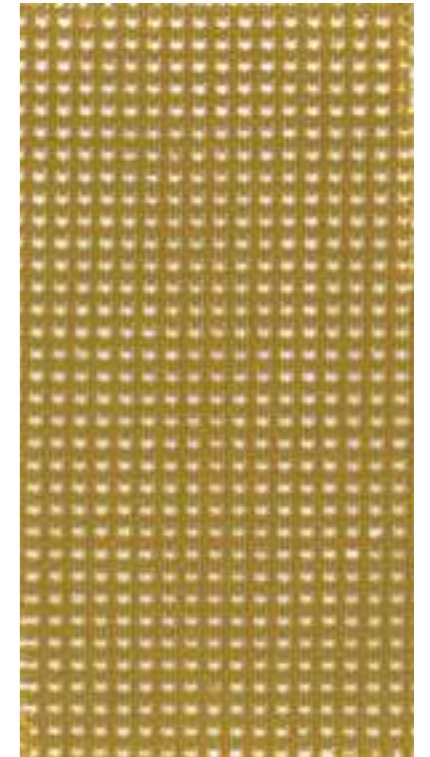
L6 113



L6 830



RX 00G Army



RX 00C Mango



RX 00H Black



RX 00J



RX 00M



RX 00L



RX 00K



RX 00I



RX 00A



RX 00B



RX 00D



RX 00E



RX 00F



— Leather

— Extra Leather

Categoria F1

Categoria G1



F1 168 Black



F1 371 Army



G1 614 Black



G1 336 Army



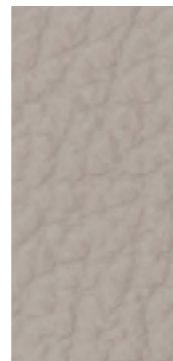
F1 329



F1 316



F1 332



F1 611



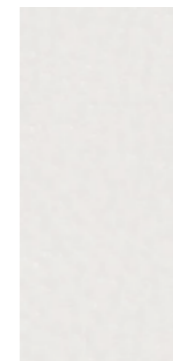
F1 260 Mango



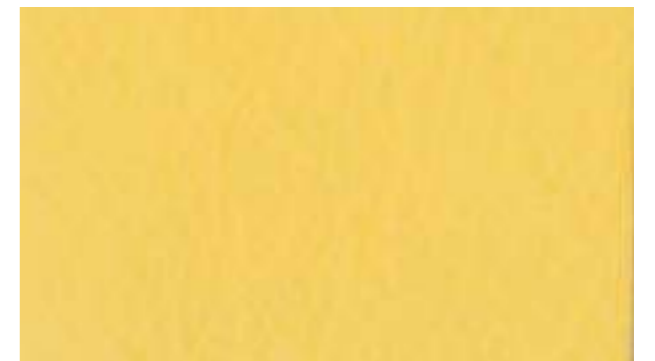
G1 250



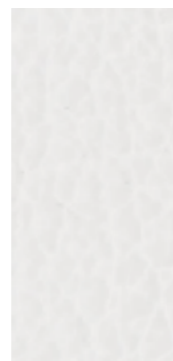
G1 252



G1 000 White



G1 640 Mango



F1 171



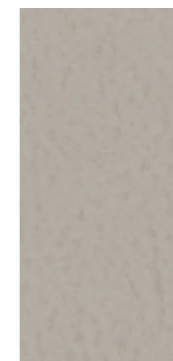
F1 167



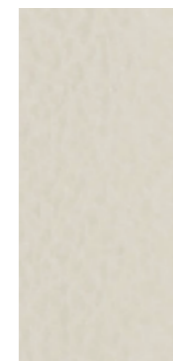
F1 140



G1 500



G1 426



G1 432



G1 590



G1 260



F1 023



F1 163



F1 165



F1 360



F1 220



G1 410



G1 605



G1 750



G1 604



G1 704



— Sudden  
by Maharam

— Remix 2  
by Kvadrat

Categoria G2

Categoria H1



G2 018



G2 024 Army



G2 029



G2 002



G2 027



G2 020



G2 036



G2 008 Mango



G2 011



G2 009



G2 031



G2 006



G2 013



G2 014



H1 152



H1 962 Army



H1 143



H1 123



H1 823



H1 422 Mango



H1 412



H1 733



H1 682



H1 653



H1 612



— Steelcut Trio 2  
by Kvadrat

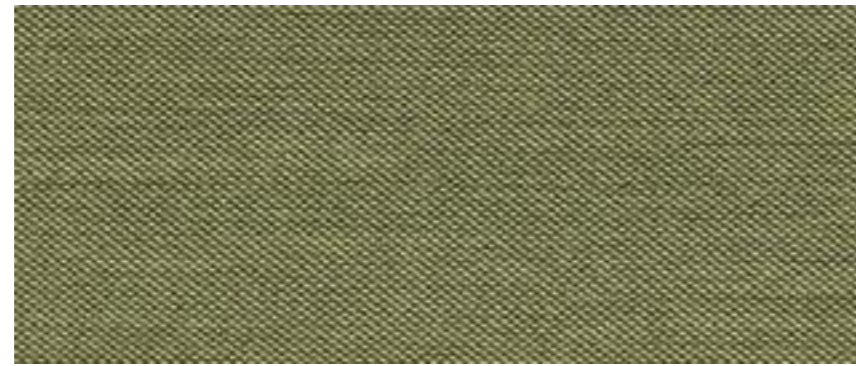
— Nabuk 3 M Liscio  
by Dani

Categoria H2

Categoria N1



H2 195



H2 915 Army



H2 383



H2 133



H2 153



H2 453 Mango



H2 124



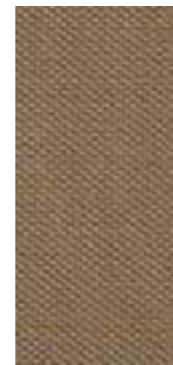
H2 713



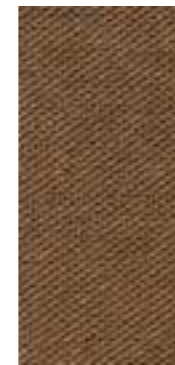
H2 105



H2 333



H2 245



H2 325



H2 883



H2 353



H2 825



H2 565



H2 665



N1 Antracite



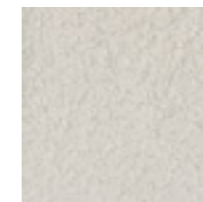
N1 Marrone scuro



N1 Grigio



N1 Seppia



N1 Sabbia





— Woods & Natural fibers

— Paintings & chromium platings



T7 008



T7 002



white oak / rovere chiaro



wengè / wengè



canaletto walnut / noce canaletto



T7 001



T7 003



T7 004



T7 006



9005 Black matte



CHARCOAL  
AKZO NOBEL  
NW300M  
Antracite



7003 Army



9006  
Alluminium grey



1003 Mango



9010 Pure White



4009 Rose



5014 Colomba



Cromo lucido



Nichel nero lucido



Oro lucido



Rame lucido

**The information in this document is subject to change without notice.**

SITIA srl  
Italy  
T +39 0424 898497 / 898382  
F +39 0424 1700102  
info@sitia.com  
www.sitia.com

Creative Direction  
MM Company / [www.mmcompany.eu](http://www.mmcompany.eu)

Concept, Graphic & Styling  
MM Company / [www.mmcompany.eu](http://www.mmcompany.eu)

Photo  
Photopiù / [www.photopiu.it](http://www.photopiu.it)

Ilya Eremeev & Natalia Andreeva Moscow [da p18 a p29]

Special thanks  
Zuffellato Arredamenti  
[www.zuffellatoarredamenti.com](http://www.zuffellatoarredamenti.com)

Printed in Italy  
Grafica BST / [www.graficabst.com](http://www.graficabst.com)

© April 2016