

Splash



Product Story

Splash, an Italian designed family of chairs, specifically designed to suit multiple applications from visitor seating to large open spaces and conference areas.

The versatile design provides ultimate comfort, without compromising on stack-ability. Splash easily accommodates being stacked up to 40 chairs on the appropriate trolley. Featuring a unique screw-less interlock, Splash is easy to assemble with a clean design throughout.

Options such as a stool, swivel chair, bench seating, four-legged base and a writing tablet system are available in this family range that offers so much more than just sitting.

The main structure is made of steel rod, the seat and the backrest is made of polypropylene and come in white, black and grey colour. This versatile chair is also available with a mesh backrest in a range of colours.



The Designers

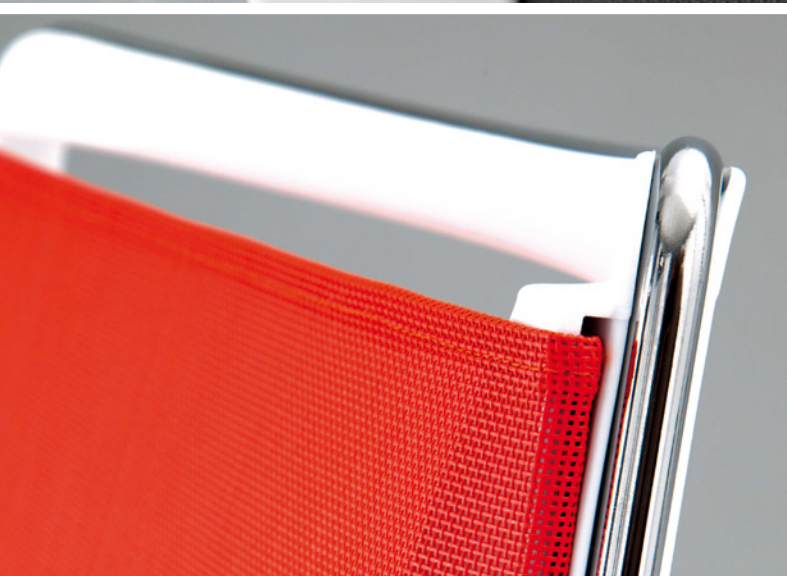
From their point of view designing an urban plan, a building or a lamp makes no difference.

They handle with all planning fields, from town planning to architecture, to environmental planning, to design and graphic design always trying to deeply study all details of every step: production, marketing, communication and company's strategy. Precision and planning rigour are the goals they aspire to, striving to 'remove', 'simplify', 'optimise' and at the same time 'personalise' what they create. The creative process is a continuous dialogue which is fundamental in order to talk out the criticalities of a project. Beyond the four hands and the two brains, it is always stimulating to find out an agreement between a male and female point of view.



NATALIA ROTA NODARI + ALBERTO BASAGLIA





Custom options are endless!

Splash components are manufactured in Italy and shipped directly to UCI's manufacturing plant. Our in-house factory capabilities allow you to select the frame powder coat colour, the plastic body colour, your mesh back colour and the upholstery for the seat. Giving you the option to customise the whole chair to suit your application.

6 MESH COLOURS

CUSTOM POWDER COATED FRAMES

CUSTOM SEAT UPHOLSTERY



Variety of Models



Also available with
a solid back seat.



FEATURES

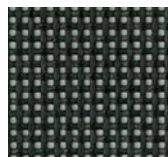
- Contemporary Italian design
- Steel frame
- Interlocking system
- Screw-less assembly
- Stackable
- Variety of models

OPTIONS

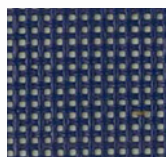
- Plastic seat in black, white or grey
- 6 different mesh colours
- Cushion seat available
 - custom upholstery colours available
- Custom powder coated frames*
- 4 leg base without castors or 5 star swivel base
- Solid back also available
- Writing table

*Diversity of colours available upon request

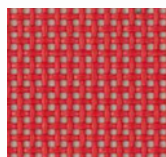
MESH COLOURS



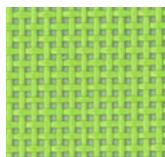
Black



Navy Blue



Red



Green



Grey



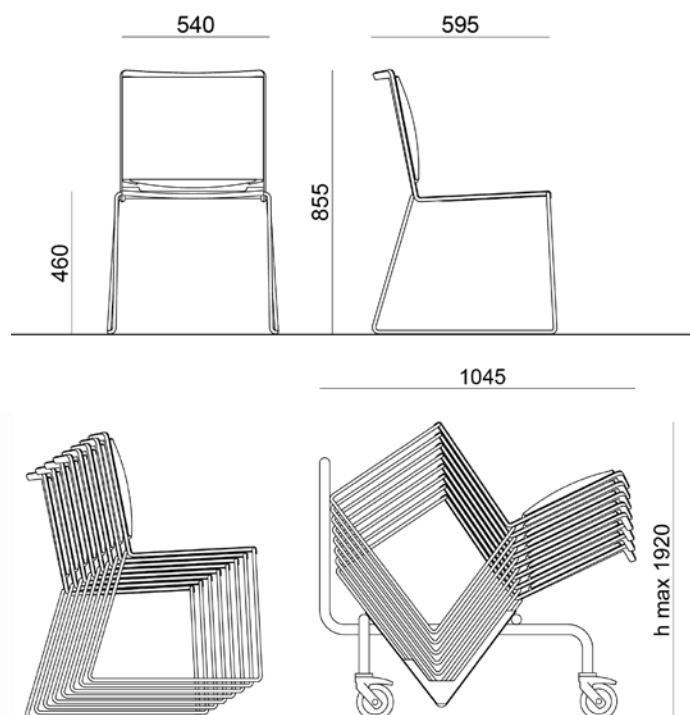
White



Stackability



SPECIFICATIONS



SPLASH SOLID SEAT STACKS

20 chairs on floor and 40 on cart

SPLASH CUSHION SEAT STACKS

15 chairs on floor and 30 on cart