

Workstation

Accessories

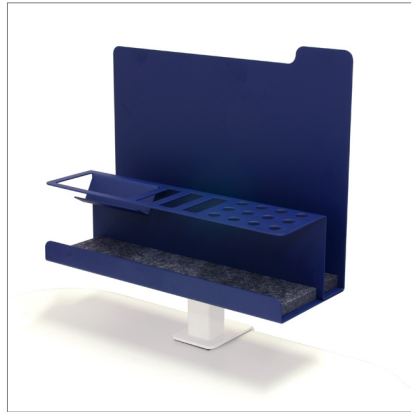


Workstation Accessories



ANGLED ACCESSORY TRAY

- Kinetik Rail Mounted
- Desk Top Mounted
- Powder Coated Steel
- Dimensions: 305Lx155Dx233H



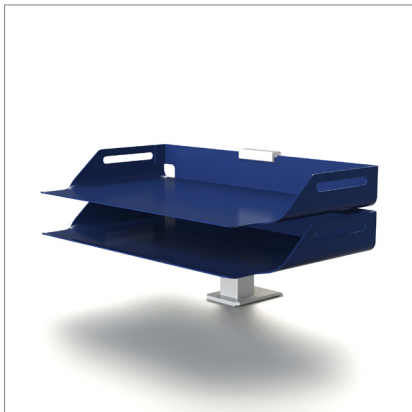
MULTI PURPOSE STATIONERY STORAGE & DOCUMENT HOLDER

- Kinetik Rail Mounted
- Desk Top Mounted
- Powder Coated Steel
- Dimensions: 330Lx126Dx262H



PEG BOARD

- Kinetik Rail Mounted
- Desk Top Mounted
- Powder Coated Steel
- Dimensions: 500Lx83Dx403H



2 TIER PAPER TRAY

- Kinetik Rail Mounted
- Desk Top Mounted
- Powder Coated Steel
- Dimensions: 377Lx240Dx105H



PET PLANTER

- Kinetik Rail Mounted
- Desk Top Mounted
- 12mm PET
- Dimensions: 435Lx225Dx175H



PLANTER

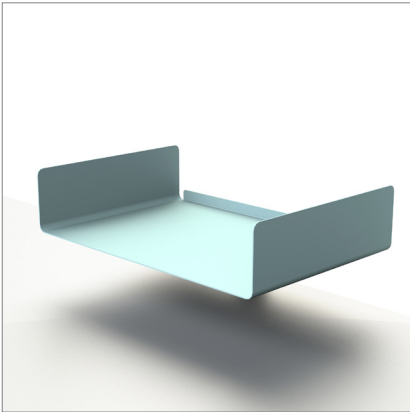
- Kinetik Rail Mounted
- Desk Top Mounted
- Powder Coated Steel
- Dimensions: 410Lx200Dx175H

FLEXIBILITY RIGHT AT YOUR WORKSTATION....

The UCI design studio has created a suite of workstation accessories that provide user functionality to tailor the workstation to individual users needs.

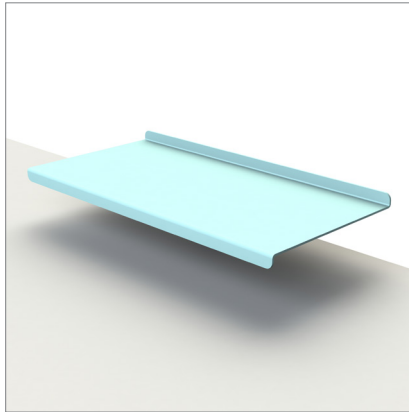
Accessories provide the opportunity to introduce highlights of colour to the workstation. UCI is one of Australia's leading workstation manufacturers with a state of the art in-house manufacturing facility. It is easy to tailor your accessory selection to suit your needs. Simply select a powder coat from the UCI exclusive OPACO colour range or any colour from the Dulux or Interpon range - the choices are endless.

Designed and manufactured from Australian Steel and Aluminium then supplied in under 5 weeks in your colour choice.



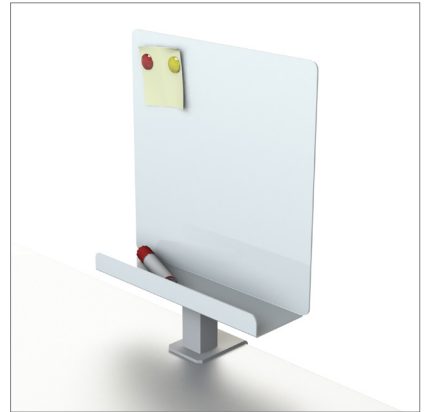
OPEN SHELF

- Kinetik Rail Mounted
- Desk Top Mounted
- Powder Coated Steel
- Dimensions: 450Lx302Dx115H



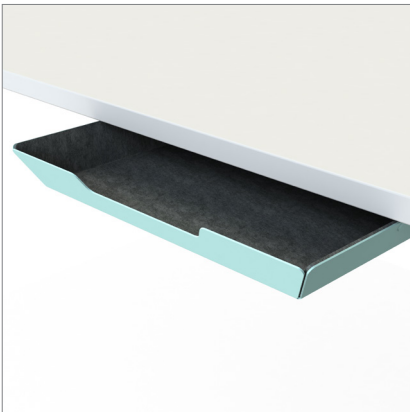
UTILITY SHELF

- Kinetik Rail Mounted
- Desk Top Mounted
- Powder Coated Steel
- Dimensions: 500Lx250D



WHITEBOARD

- Kinetik Rail Mounted
- Desk Top Mounted
- Anti-Graffiti Powder Coated Whiteboard Steel
- Dimensions: 300Lx77Dx300H



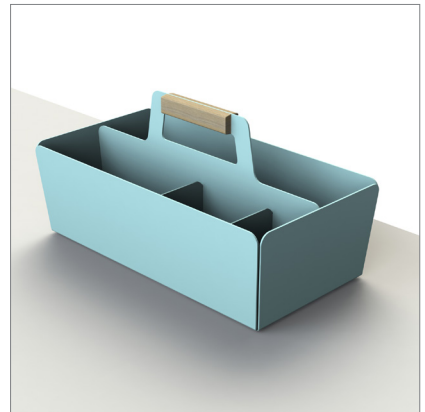
UNDER DESK TRAY

- Under Work Top Mounted
- Powder Coated Steel
- Dimensions: 405Lx320Dx50H



UNDER DESK DRAWER

- Under Work Top Mounted
- Powder Coated Steel
- Dimensions: 470Lx320Dx70H



DESK TOTE

- Freestanding
- Powder Coated Aluminium
- Dimensions: 323Lx173Dx162H
- Option: Wooden Handle



Phone not included

PHONE/TABLET STAND

- Powder Coated Steel
- Dimensions: 110Lx153Dx179H
- Options: Mura 542 Or Mura 442 Lining



Laptop not included

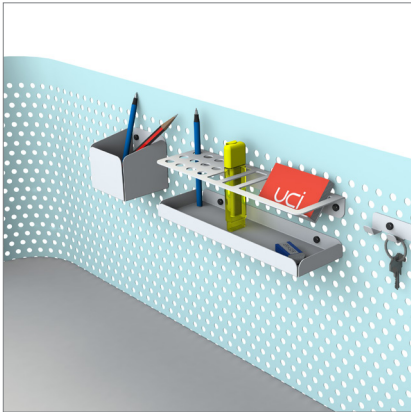
LAPTOP STAND

- Powder Coated Steel
- Dimensions: 180Lx179Dx204H
- Options: Mura 542 Or Mura 442 Lining



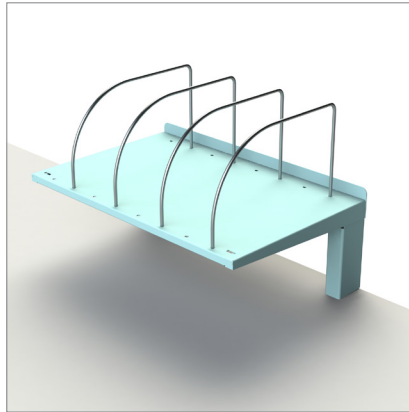
4 BINDER STORAGE BOX

- Kinetik Rail Mounted
- Desk Top Mounted
- Powder Coated Steel
- Dimensions: 298Lx290Dx333H



FENCE PERFORATED SCREEN MOUNTED ACCESSORIES

- Powder Coated Steel
- Accessories - Key Hook, Long Shallow Tray, Pencil / Pen Holder, Business Card / Multipurpose Stationary Holder



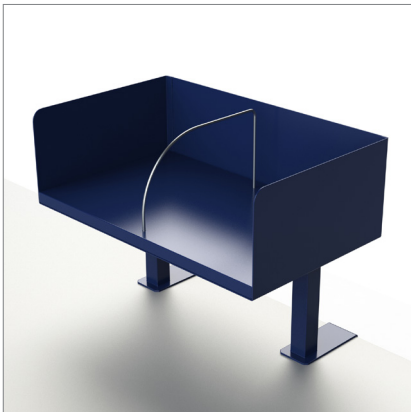
DESK MOUNT SHELF (ZODIAC)

- Slide On Desk Top Mount 25mm or 33mm
- Powder Coated Steel
- Lengths: 450L to up to 1200L available
- Depth: 285D
- Height above work top 150H, 200H and 300H



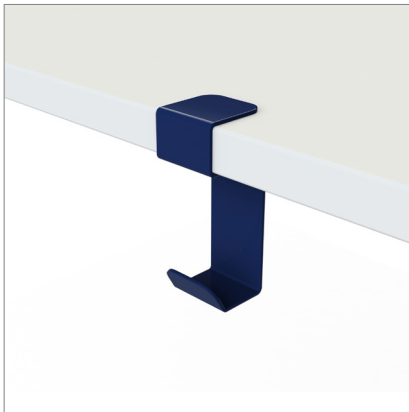
MAGNETIC PEN HOLDER

- Powder Coated Steel
- Dimensions: 72Lx53Dx120H



DESK MOUNT SHELF

- 200mm off work top mount
- Powder Coated Steel
- Dimensions: 300Lx300Dx165H
- Dimensions: 400Lx300Dx165H
- Dimensions: 500Lx300Dx165H
- Dimensions: 600Lx300Dx165H



BAG HOOK

- Powder Coated Steel
- Dimensions: 40Lx45Dx115H
- Suits 25mm work tops



UCI BRANDED BAG HOOK

- Powder Coated Steel
- Dimensions: 40Lx85Dx115H
- Suits 25mm work tops



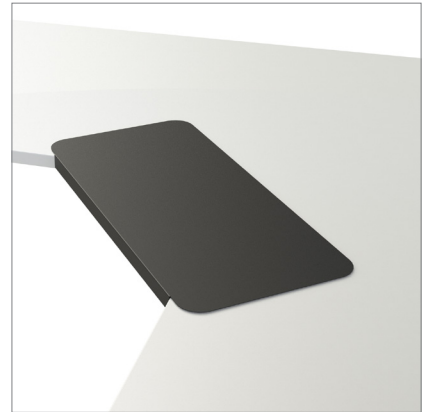
WORKTOP PROTECTOR TYPE A

- Powdercoated Antimicrobial Steel
- Custom sizing to suit worktop



WORKTOP PROTECTOR TYPE B

- Powdercoated Antimicrobial Steel
- Custom sizing to suit worktop



KEYBOARD LOZENGE

- Slide On Desk Top Mount 25mm or 33mm
- Powder Coated Steel
- Dimensions: 610Lx278Dx28H



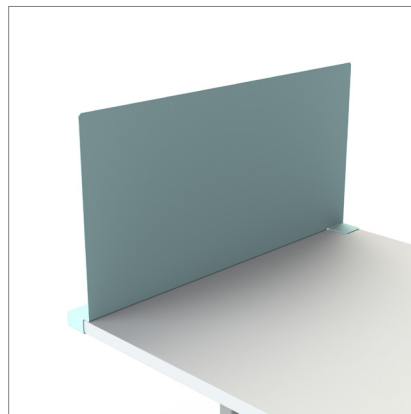
PRIVACY SCREENS AND OPTIONS

Our Design Studio has developed a suite of workstation divider screens. These are repositionable by the user, enabling users to define their workspace in the modern open plan office.

Options include customer selected fabric on stitched upholstered privacy screens, powder-coated pegboard for storing stationery items. UCI also has options for whiteboards and pinboards.

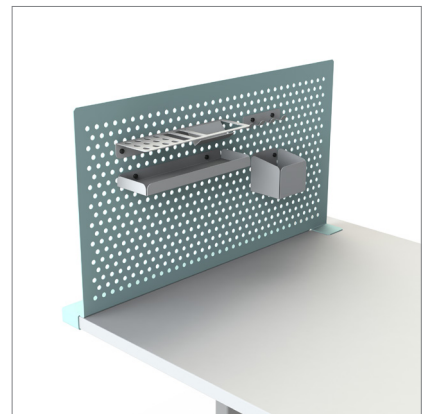
Because UCI manufactures in Australia, these can be supplied in your specified finish in under 5 weeks.

Privacy Screens & Options



WAFER

- Slide On Desk Top Mount 25mm or 33mm
- Powder Coated Steel
 - Anti-Graffiti Powder Coated Whiteboard
 - PET Pin board Options
- Dimensions: 700Dx380H & 750Dx380H



PERFORATED WAFER WITH ACCESSORY OPTIONS

- Slide On Desk Top Mount 25mm or 33mm
- Powder Coated Steel
- Multiple accessory options
- Dimensions: 700Dx380H & 750Dx380H



UPHOLSTERED

- Slide On Desk Top Mount 25mm
- Pinnable Option
- COM Fabric
- Dimensions: 690Dx280H
- Dimensions: 690Dx430H
- Dimensions: 790Dx280H
- Dimensions: 790Dx430H



24MM PET

- Slide On Desk Top Mount 25mm
- Pinnable
- 24mm House PET or 24mm Echo Panel
- Dimensions: 690Dx430H
- Dimensions: 690Dx480H
- Dimensions: 790Dx430H
- Dimensions: 790Dx480H

PROJECT:
Master Builders
Queensland

FEATURING:
2 Tier Paper Tray

PROJECT:
Melbourne
Magistrates Court

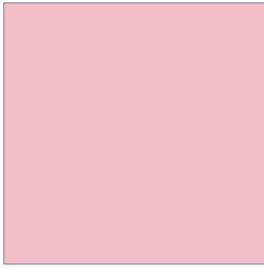
FEATURING:
Desk Mount Shelf
(zodiac)



Magistrates' Court
Melbourne



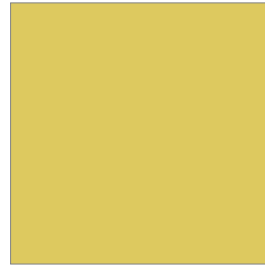
UCI Exclusive OPACO Colour range



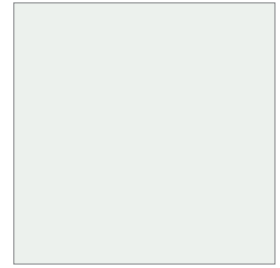
CORAL



FLEURIEU



SAND DUNE



GREAT WHITE



STINGRAY



SEA GRASS



BLUE SWIMMER



SQUID INK

Dulux or Interpon powder coat colour ranges are also available.

Product Lifecycle:

UCI is committed to its impact on the environment. All workstation frames manufactured by UCI Manufacturing are designed for disassembly and are 95% recyclable.

Note: client specified materials are excluded from this statement.

With the use of basic hand tools UCI Manufacturing workstation frames can be broken down into raw material elements such as aluminium, steel and plastic (Moulded plastic components greater than 50gm in weight have recycling logo identification).



RECYCLABLE



Warranty: 10 years

Adelaide

Ground Floor, 27 Halifax Street, Adelaide
SA 5000, Australia
t +61 (08) 8423 6330
e adelaide@uci.com.au

Brisbane

3 Primrose Street, Bowen Hills
QLD 4006, Australia
t +61 (07) 3854 1600
e brisbane@uci.com.au

Canberra

Unit 14/71 Leichardt Street, Kingston
ACT 2604, Australia
t +61 (02) 6239 1866
e canberra@uci.com.au

Darwin

Ground Floor, 27 Halifax Street, Adelaide
SA 5000, Australia
t +61 (08) 8423 6330
e darwin@uci.com.au

Hobart

14-16 Tasma Street, Hobart
TAS 7000, Australia
t +61 (03) 6231 3077
e hobart@uci.com.au

Melbourne

Unit 3/62 Fallon Street, Brunswick
VIC 3056, Australia
t +61 (03) 8379 0200
e melbourne@uci.com.au

Perth

Level 1,321 Murray Street, Perth
WA 6000, Australia
t +61 (08) 9486 8777
e perth@uci.com.au

Sydney

Tenancy 202,
1 Joynton Avenue, Zetland
NSW 2017, Australia
t +61 (02) 9212 2600
e sydney@uci.com.au

Ulverstone

111 Eastland Drive, Ulverstone
TAS 7315, Australia
t +61 (03) 6425 1399
e ulverstone@uci.com.au

