

Luma

Workstation



Introducing Luma sit stand desk

UCI's Design team has developed the Luma desk to provide the Australian market with a cost effective alternative Sit to Stand desk solution over less reliable imports.

Like all UCI sit to stand workstations Luma is manufactured in Australia from Australian steel and aluminium. Incorporating class leading technology with Danish linear actuators and offering a 10 year warranty on all structural components and 5 years on the linear actuators.



Luma back to back configuration

The addition of the back to back configuration to the Luma range now provides a fully capable linear workstation solution.

The B2B configuration has the option to mount cable trays off the bridge providing a resolved cable management solution.



The B2B configuration also has the capability to mount the UCI Zodiac screen range off the bridge keeping screens in a static position. Alternatively, the Kinetik rail system can be used to mount frameless screens providing a screen solution that moves with the desk.

Luma single bench configuration



The Luma Bench configuration has been further developed with the capability of mounting cable trays off the lower leg, keeping the cable tray in a fixed position.



The Bench solution now has the capability of mounting the UCI Zodiac screen range off the lower leg keeping the screen in a fixed position while the work top height is adjusted.

Kinetik accessory rail system

Luma is highly configurable with the addition of the Kinetik rail system offering multiple user considered solutions, such as:

01 Kinetik Accessory Rail System

The Kinetik accessory rail is easily attached to the back of your Luma sit stand desk to allow the user to easily attach the right accessories for their workspace.

02 Privacy Screens and Modesty Panels

User repositionable privacy screens provide flexibility of privacy screen positioning. Kinetik offers a large range of shapes, size and colour options for the user to create their own individual space.

03 Cable Management

With dedicated cable path ways for power and data cables users can keep those unsightly cables contained in the Kinetik cable tray with optional lids for mounting below desk power outlets.

04 Planter Box

The Kinetik planter lets you bring the outside environment inside to freshen up your workspace.

05 Zeus Above Desk Power Rail

The Zeus power rail mounts in arm's reach and can be configured to suit your above desk power requirements including options for USB power.

06 Paper Trays

The simple 2 tier paper tray provides users with a place to keep all those loose papers that clutter the workspace.

07

a.

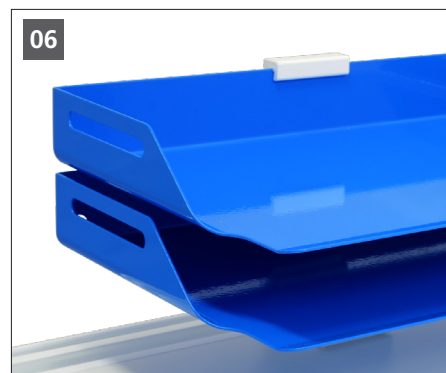
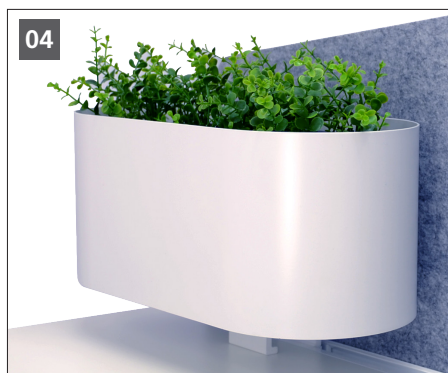
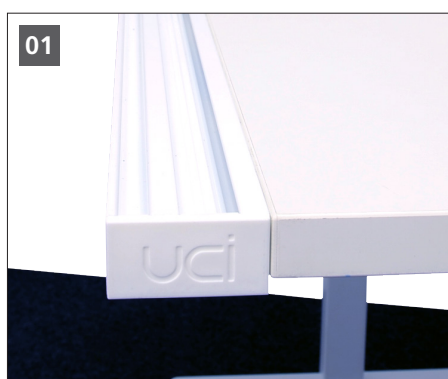
b.

c.

07 Desk Panels

Luma has 3 switch options to control your desk from sitting to standing.

- a. Basic with up / down function.
- b. 2 memory position with LED light indicator and Bluetooth function for use of desk control application.
- c. 4 memory position with LED light strip, digital height display and Bluetooth function for use of desk control application.



Specification summary

Powder Coat:

Available in White Satin

Height Range (Using 25mm Worktop):

Electric Sit-To-Stand 620mm - 1270mm

Width Range:

900mm - 2400mm

Depth Range:

600mm - 850mm

Desk Control App:

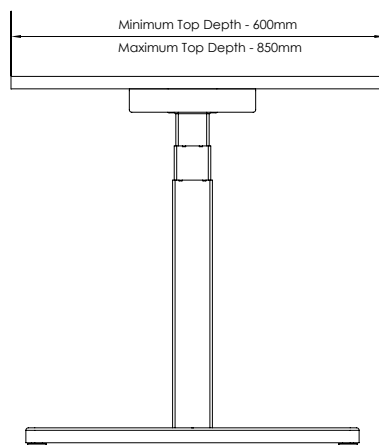
Download the Desk Control™ app from the app store to connect to the desk via Bluetooth®.

Warranty:

5 year warranty on electrical components

10 year warranty on structural components

Work Depth Configurations:



Worktop Height Configurations:



Product Lifecycle:

UCI Manufacturing is committed to its impact on the environment. All workstation frames manufactured by UCI Manufacturing are designed for disassembly and are 95% recyclable.

Note: *client specified materials are excluded from this statement.*

With the use of basic hand tools UCI Manufacturing workstation frames can be broken down into raw material elements such as aluminium, steel and plastic (Moulded plastic components greater than 50gm in weight have recycling logo identification).

