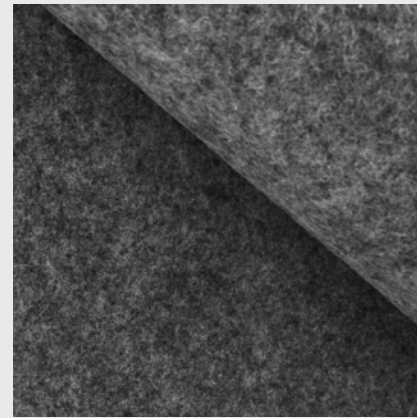


OMEGA MATERIALS

FELT COLOURS



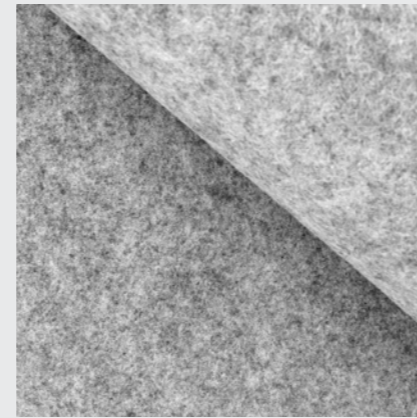
anthracite

F01



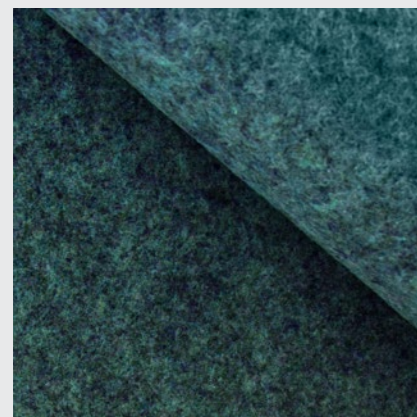
aquamarine blue

F04



light grey

F02



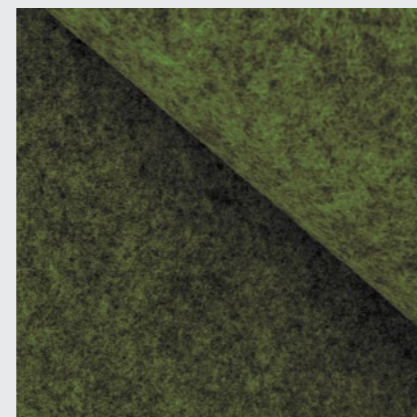
sapphire blue

F03



sandstorm

F06



moss green

F05

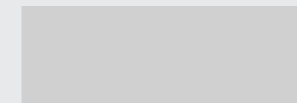
UPHOLSTERY

Aside from the Casala upholstery, there is a wide fabric collection available from renowned manufacturers. Alternative upholstery on request. Visit www.casala.com/samples for a current overview of our fabric collection.



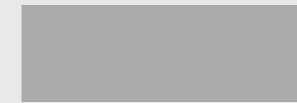
OMEGA FINISHES

SILK GLOSS



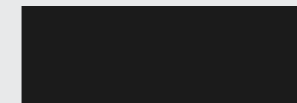
Light grey

SG11



Aluminium grey

SG12



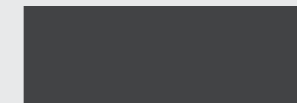
Black

SG15



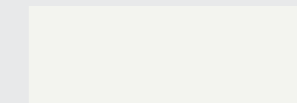
Tenor grey

SG17



Traffic grey

SG20



Traffic white

SG16



Silver grey

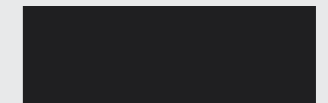
SG21



Atomium grey

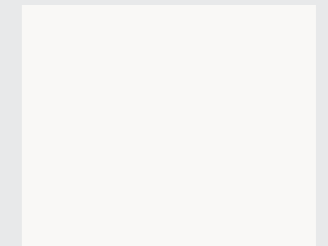
SG23

SOFT TOUCH



Black

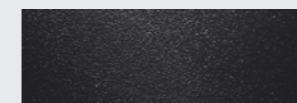
SFT01



White

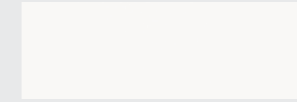
SFT02

FINE TEXTURE



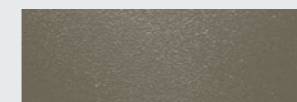
Black

FT11



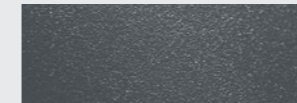
White

FT12



Olive green

FT16



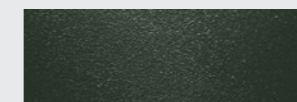
Sharkskin grey

FT17



Pebble grey

FT21



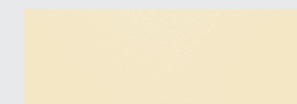
Pine green

FT22



Soft pink

FT23



Soft ivory

FT18



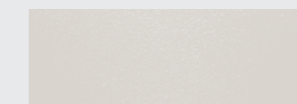
Foggy green

FT26



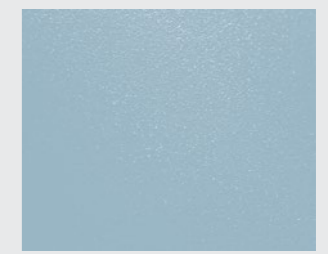
Midnight blue

FT19



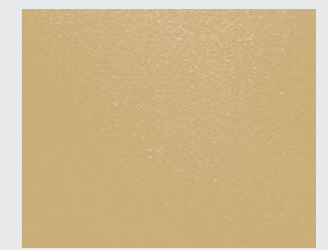
Dusty grey

FT20



Frosty blue

FT27



Sunflower yellow

FT24



Maroon red

FT25

POWDER COAT INFO

The powder coating used, does not contain toxic substances or components that hold heavy metals. During the production process, the redundant powder is intercepted and re-used in our production process.

Powder coating colours that are not standard to the Casala collection can be used at the customer's request. Special powder coat colours on request only.

The additional price varies by colour and order quantity. When the colour is received, a sample will be produced, which will be sent to the client for approval. After approval the order will be finalized, the lead time after approval is approximately two weeks.

The colours in this publication may differ to the original product. We recommend requesting a product sample via www.casala.com/samples.